



WINDOWS

a new play by Tawni O'Dell

WINDOWS

a new play by Tawni O'Dell

WINDOWS

a new play by Tawni O'Dell

Windows

Is everything okay in there?

11 lives, 8 stories, endless frustration.

Fear, hilarity, anger, loss, and love unfolding behind curtains, blinds, broken glass, and bars. Whether navigating the self-reflection of isolation, or the unease of a chance meeting between strangers in need, or the simple realization of how much we value our most basic connection with others, *Windows* delves into the devastation and new beginnings found in a world forced to face an abyss together but alone. What we each endured as individuals when time suddenly stood still may have differed, but we were all changed by the experience. Our characters reshaped. For better or worse.

What were you doing in 2020?

The Play

- Written by New York Times best-selling author Tawni O'Dell
- Based on the acclaimed Apple Podcasts series, "Closing the Distance"
 - Episodes featured performances by Jason Alexander, Tony Danza, Kelli O'Hara, William Hurt, and Kathleen Turner
 - Ranked in the Top 100 on the Apple Podcasts Arts Chart
 - Garnered five-star reviews

The Production

- A dramatically staged presentation of eight heartfelt stories about how some of us managed to face the pandemic
- Scheduled to open at The Town Hall in New York City on March 25, 2024.
- Running time: Approximately 90 minutes (no intermission)

Path to Broadway

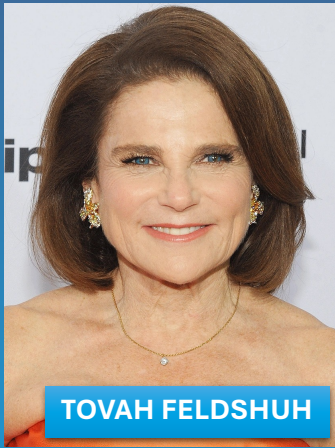
- Following a reading last October with A-List Broadway actors, the Producers were compelled to present *Windows* to a New York audience. *Windows* will make its World Premiere, with a star-studded cast, at The Town Hall for a limited 5-performance run, beginning March 25, 2024.
- The purpose of this engagement is to present *Windows* to the Media with the intent of moving the Play directly to Broadway. The Producers have entered into an arrangement with the not-for-profit theatre company, Out of the Box Theatrics in order to reduce all production costs and to offer investor participants the most beneficial tax benefits.
- Details as to these tax benefits and production arrangements will be forwarded to all interested investors and the Producers will elaborate on the enormous potential of the monetization of this Play.

Cast

(Listed in alphabetical order)

- CRAIG BIERKO (TONY and Drama Desk Nominee and Theatre World Award Winner)
- TONY DANZA (4-time Golden Globe Nominee, People's Choice Award-Winning Actor)
- ERIN DARKE (TV regular on "The Marvelous Mrs. Maisel")
- JEFFREY DONOVAN (Star of the hit series "Burn Notice" and "Law & Order")
- MELISSA ERICCO (TONY Nominee, multiple Drama Desk and Helen Hayes Nominee)
- TOVAH FELDSHUH (4-time TONY Nominee and Broadway icon)
- ADAM KANTOR (Veteran Broadway performer – 8+ Broadway shows)
- JESSE NAGER (Veteran Broadway performer)
- TONYA PINKINS (TONY Award, Drama Desk Award, Olivier Award Nominee)

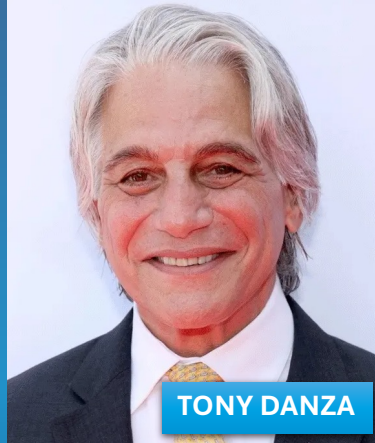
Cast



TOVAH FELDSHUH



JESSE NAGER



TONY DANZA



ERIN DARKE



MELISSA ERRICO



ADAM KANTOR



CRAIG BIERKO



TONYA PINKINS



JEFFREY DONOVAN

Team

- MARMAXMEDIA / ALEXANDER "SANDY" MARSHALL (Producer) – Winner of every major award on Broadway, including the TONY and the Pulitzer
- TAWNI O'DELL (Playwright) – Author of multiple *New York Times* bestsellers, playwright for the Off-Broadway plays, *When It Happens to You* and *Pay the Writer*
- MITCHELL MAXWELL (Director) – Producer / Director of more than 65 major theatrical productions, as well as 8 motion pictures
- TONY-nominated design team, including:
 - DAVID WOOLARD (Costume Design)
 - ROB BISSINGER & ANITA LA SCALA (Scenic Design)
 - JAMIE RODERICK (Lighting Design)
 - BILL TOLES (Sound Design)

Director

Mitchell Maxwell

- Veteran Broadway and Film Director / Producer
- Selected Credits Include:
 - *Angry Housewives* in London's West End and off-Broadway in NYC
 - *The City Club*, Off-Broadway in NYC
 - Films: *Tarnished Notes* and *Spin the Bottle*
- Multiple TONY, Olivier, and Drama Desk Nominee/Winner
- Producer of the Pulitzer Prize-winning play, *Dinner With Friends*
- Mr. Maxwell studied directing under theatrical legends: Robert Lewis, Elia Kazan, and Harold Clurman, all founding members of the historic Group Theatre

Relevance

The Director's Note

It is essential that the artistic community clearly understand the changing landscape that our society authors. An artistic response is not one to judge or to politicize, but simply to provoke thought as a conduit to change and understanding. Whether realized or not, the pandemic changed us all in a myriad of ways that transcended the physical.

We as a country must address the emotional carnage of Covid. The media pays lip service to what the pandemic did to the emotional state of our nation. Now that people are not dying in vast numbers, we, as a society, have "moved on," leaving a country cloaked in depression, substance abuse, suicide, and whose denizens walk beneath a cloud of soot. It is time for the creative community to address these lingering effects the way the great artists of the past addressed similar sensibilities that followed both World Wars, the Depression, Vietnam, and 9/11. We must purge/talk and share in order to heal and move on toward brighter days. This is a legacy play.

Contact

Mitchell Maxwell
Director / Producer

mmaxwell@marmaxmedia.com

+1.917.653.8202

Lisa Black
Director of Distribution

garnetgirl@icloud.com

+1.302.388.1036

Alexander "Sandy" Marshall
Producer

smarshall@marmaxmedia.com

+1.212.675.3603

Sara Giacomini
Executive Assistant

sgiacomini@marmaxmedia.com

+1.201.249.7421



MarMaxMedia

THE WORLD IS OUR STAGE

www.MarMaxMedia.com

